

SINGLE BATTERY CHARGER

(15A MODEL: GSBC15)



INSOLATION ENERGY LTD.

Features:

- Constant Current- Constant Voltage (CC-CV) Type Charging Profile.
- Settable Charging Current 4A, 10A & 15A (Suitable to charge 20AH to 230AH battery).
- Suitable to charge Lead Acid/ Tubular/ VRLA Batteries.
- SMPS based control technique ensures Constant Charging Current.
- LED display for displaying charger operational activities (Mains ON, Boost Mode, Trickle Mode and Battery Reverse Polarity Indications).
- User Friendly Parameter Selection Interface.
- Output Isolation.
- HF Switching Technology
- Protected against Phase, Neutral, Earthing and Reverse Polarity.

Specifications:

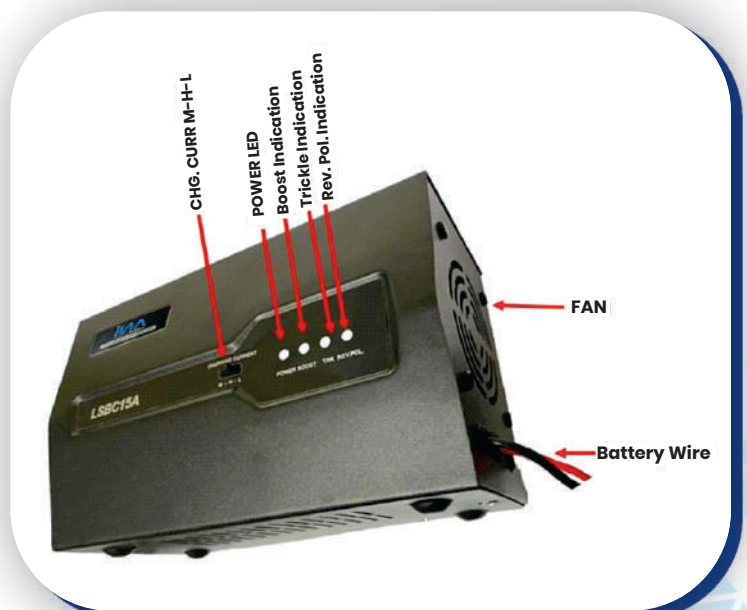
Parameter	Specification
Battery Voltage Range	1 Nos. 12V Battery
Charging Voltage	15VDC \pm 3.5%
Trickle Voltage	13.6VDC \pm 2%
Charging Currents Selections	4A, 10A & 15A \pm 5%
Charging Profile	Constant Current, Constant Voltage followed by Trickle Voltage 13.6V \pm 2%
Input Voltage	140-280V AC Single Phase.
Input Frequency	50Hz Nominal
Cooling	Forced Air Cooled
Indications	LED Display
Isolation	HF Transformer based Input-Output Isolation
Dimensions	225mm(L) X 125mm(W) X 145mm(H)
Net Weight	1.40 Kgs

Operating Procedure and Precautions:

1. With main switch off connect the battery with the charger in correct polarity. In correct polarity, there will be no indication; else, there will be RED LED indication for reverse polarity.
2. Open all the vent caps of the battery.
3. Select charging current through the slider switch according to the battery AH capacity
 - Select Low position upto 40AH Battery
 - Select Medium position >40AH upto 100AH
 - Select High position for >100AH

This selection is very important, else there could be damage to the battery happen or may not charge.

4. Connect the charger to a 5/15A Mains socket & Switched On.
5. Upon switching on the Mains, Mains ON (RED Colour) and BOOST MODE (Yellow Colour) indication will turn on.
6. Upon charging completion, the charger will return to trickle mode & Trickle LED will be on.
7. Switch off the Mains, as Trickle LED will be on & disconnect both the Battery Wires from the Terminals.
8. Install Charger away from the battery & well ventilated place. Otherwise, the cooling of the unit will not be effective and may considerably reduce the charger life.
9. Also, ensure that the charger is kept at a place where it should not be subjected to any water source.
10. The product is covered under a warranty period of 12 months, subjected to any manufacturing defect. For any Service Assistance you may connect with us on Toll Free No- 1800-102-5551



AMONGST NATION'S TOP SOLAR BRANDS IN JUST HALF A DECADE!

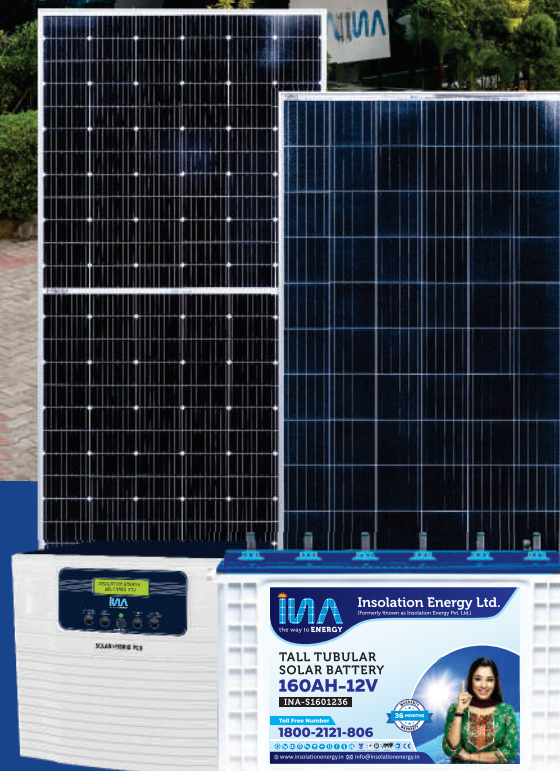
FULLY AUTOMATED PRODUCTION TECHNOLOGY



BIS



ALMM



SOLAR PANEL

Range - 40Wp - 545Wp

SOLAR BATTERY

Range - 40AH - 200AH

SOLAR PCU

Range - 750VA - 15000VA

INSOLATION ENERGY LTD.

Regd. Office - G-25, City Center, S.C. Road, Jaipur - 302001 | Ph. +91 141 4019103, 4029103

Works: (A) 25KM Milestone, Jaipur-Delhi Bypass, Near Daulatpura Toll Tax, Village Bagwara, Jaipur - 303805

(B) Khasra No. 11/1, Jatawali Industrial Area, Near Shyam Dhani Masala Factory, Tehsil-Chomu, Jaipur - 303806

Delhi Office - 502 A, Arunachal Building, Barakhamba Road, Connaught Place, New Delhi - 01 | Ph. +91 11 43723333

For Sales Enquiry, Call: **7240 444 666** | Toll Free No. - **1800-2121-806**

Web.: www.insolationenergy.in | Email: info@insolationenergy.in

Follow Us :     