

INSOLATION ENERGY LTD.

One of India's Leading Solar Panel Manufacturers





THE INDIAN SOLAR ENERGY MARKET

01

INDIA'S SOLAR POTENTIAL

is about 748 GW assuming 3% of the waste land area to be covered by Solar PV modules.

02

INDIA SOLAR ENERGY MARKET

is about 300 GW Solar Plant installation upto 2030& target Given by India Govt. is 500 GW.





CURRENT ACTIVITIES AND PROJECTS

01

PM SURYA GHAR MUFT BIJLI YOJANA

aims to provide 300 units of free electricity every month to light up one crore Indian households.

02

PM KUSUM YOJNA

aims to Provide 25 GW of solar Power Plant at Farmer's Land





INA Solar – Sustainable Energy You Can Count On!

A BSE SME-listed company, Insolation Energy Limited (INA Solar) has been delivering sustainable energy solutions for over **8 years**. With a current manufacturing capacity of 1 GW and three state-of-the-art units based in Jaipur, Rajasthan, INA Solar has earned a place among the **Top 10** solar companies in India.



LEADERSHIP



Mr. Manish Gupta

Chairman

The Flagbearer!

Innovative Leadership: Mr. Manish Gupta, Founder and Chairman, propels INA to new heights through his visionary leadership and deep industry expertise.

Diverse Experience: With over 25 years of leadership across sectors such as Steel, Real Estate, and Health & Fitness, Mr. Gupta brings a rich and versatile perspective to the solar industry.

Industry Recognition: Under his leadership, INA has earned numerous accolades, including the prestigious Public Sector Solar Leadership Award and the Green Entrepreneur of the Year award.

Community Engagement: Beyond business, Mr. Gupta is actively involved in social and industry organizations, reflecting his commitment to both sustainable growth and societal well-being.

LEADERSHIP



Mr. Vikas Jain

MANAGING DIRECTOR

The Innovator

Driving Force: Mr. Vikas Jain, Founder and Managing Director, has been instrumental in steering Insolation Energy toward becoming one of India's leading solar panel manufacturers.

Quality Advocate: A champion of excellence, Mr. Jain has been pivotal in positioning INA as a quality-focused enterprise, ensuring unwavering adherence to the highest industry standards.

Industry Veteran: With 25 years of experience and a strong foundation in engineering, Mr. Jain is acclaimed for his innovative, technology-led approach and strategic business insight.

Innovation Champion: Dedicated to staying at the forefront of technological advancements, he drives INA's culture of excellence across innovation, manufacturing, and operations.

Transformational Leadership: Mr. Jain's visionary leadership—marked by bold restructuring and a relentless pursuit of service excellence—has propelled INA to remarkable growth while amplifying its impact on society.



MISSION

Our mission is to deliver reliable, affordable solar solutions that empower communities, protect the environment, and accelerate the transition to a sustainable energy future.



VISION

To become a global pioneer in solar innovation, leading the charge toward a cleaner, greener planet powered entirely by sustainable energy.



VALUES

We value trust, collaboration, and accountability. Guided by strong governance and sustainability, we deliver innovative, reliable energy solutions—creating lasting value for communities, the planet, and our stakeholders.



BRAND PROMISE



INNOVATE

Via extensive research & cutting edge technology to create "Top Quality-High Performance" Solar Products.



INSPIRE

A great deal of people to "Invest in Solar" via structured marketing & seamless operational framework.



IMPACT

via reducing carbon footprint & contributing towards building a clean pollution free world.





GOALS

INA aims to revolutionize the solar energy industry by delivering cutting-edge, sustainable solutions that drive global energy transformation. Our goal is to be a leader in renewable energy, setting benchmarks for innovation, efficiency, and environmental stewardship.



OBJECTIVES

We are committed to expanding our market presence through continuous technological advancements and strategic partnerships. INA strives to achieve unparalleled operational excellence, ensuring top-tier performance and customer satisfaction in every project we undertake.



OUR ETHOS: “TOGETHER WE SHINE!”

A reflection of our belief in shared success creating value through transparency, ethics, and inclusive growth. At INA Solar, integrity guides our journey as we grow collectively with all stakeholders.

B2B

Together we do business
Together we flourish.

B2C

You buy our product and
‘shine’ by saving big on
your power expenses.

B2E

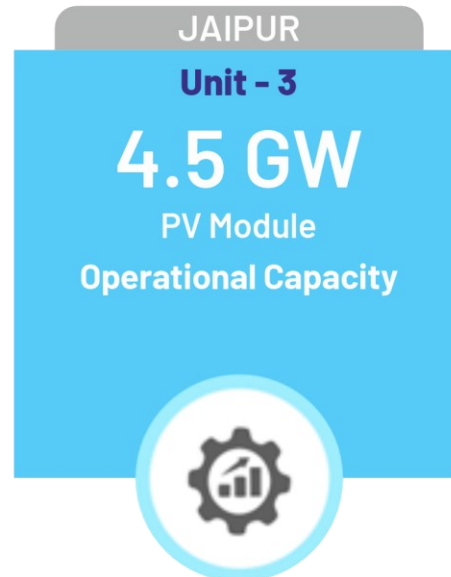
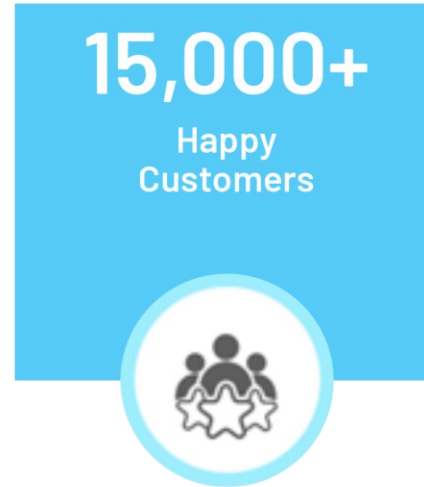
Together we work
Together we flourish

B2G

Together we associate,
Together we deliver value
& add credibility.



INA SOLAR FACT SHEET



“INA SOLAR COMPETITIVE STRENGTH”



Extensive Range of
Products



State-of-the-art
manufacturing's In-house
Reliability testing
Laboratory



Trusted BSE SME
Listed Company



Strong Channel Partner
Network



Strong Brand Value



ASSOCIATE PARTNER



BRAND PARTNERSHIP!

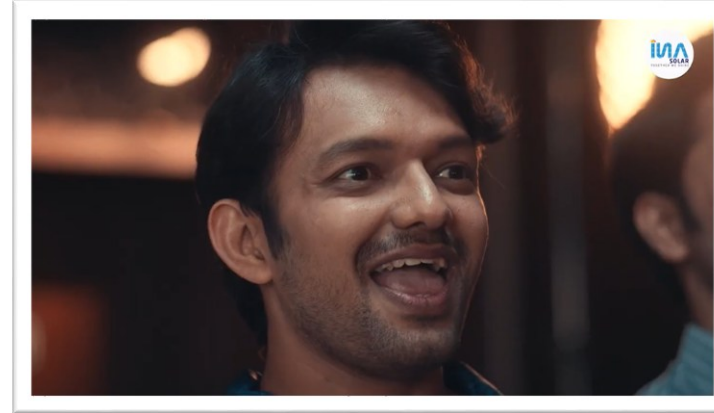
Insolation Energy Limited (INA Solar) has partnered with the illustrious T-20 Cricket Team-Lucknow Super Giants as their "Official Solar Partner" for the T20-season 2025 - 2026 to promote the use of Solar Energy to a much larger pool of audience.

With this collaboration with Lucknow Super Giants, INA Solar is all fired up towards achieving one of the company's core objectives- "To expand the Renewable Energy landscape of the country by making judicious, eco-friendly strides towards large-scale adoption of Solar Power".

VIDEO



LSG ki har hit, SOLAR Wali lit!



Idhar udhar kya dekhna humne,
jab **INA Solar** chamak raha ho samne!



MANUFACTURING FACILITIES

Precision Engineering for high-quality manufacturing.

FACILITIES:

INA 1 – Module Factory :

Insolation Energy Ltd, Daulatpura, Jaipur
200 MW

INA 2 – Module Factory :

Insolation Green Energy Pvt. Ltd., Jatawali, Jaipur
750 MW

INA 3 – Module Factory :

Insolation Green Energy Pvt. Ltd., Sawarda, Jaipur
4.5 GW

INA 4 – Cell Factory :

Insolation Green Energy Pvt. Ltd., Narmadapuram, MP
4.5 GW

INA 5 – Aluminum Factory :

Insolation Green Energy Pvt. Ltd., Narmadapuram, MP
18,000 MTA



INA 1 - Factory

INSOLATION ENERGY LTD. | 200 MW

Near Daulatpura Toll Tax, Jaipur-Delhi Bypass, Jaipur, Rajasthan – 303805



FACTORY VIEW MANUFACTURING PLANT (INA 1)



INA 2 - Factory

INSOLATION GREEN ENERGY PVT. LTD. | 750 MW
Jatawali Industrial Area, Tehsil Chomu, Jaipur, Rajasthan – 303806



FACTORY VIEW MANUFACTURING PLANT (INA 2)



FACTORY VIEW MANUFACTURING PLANT (INA 2)





INA 3 - Factory

INSOLATION GREEN ENERGY PVT. LTD. | 4.5 GW

Nh -48, Sawarda, Delhi - Ajmer Expressway, Jaipur, Rajasthan – 303348



INA 4 & 5 - Factory

INSOLATION GREEN ENERGY PVT. LTD.

Mohasa-Babai, Narmadapuram, Bhopal, Madhya Pradesh - 411661

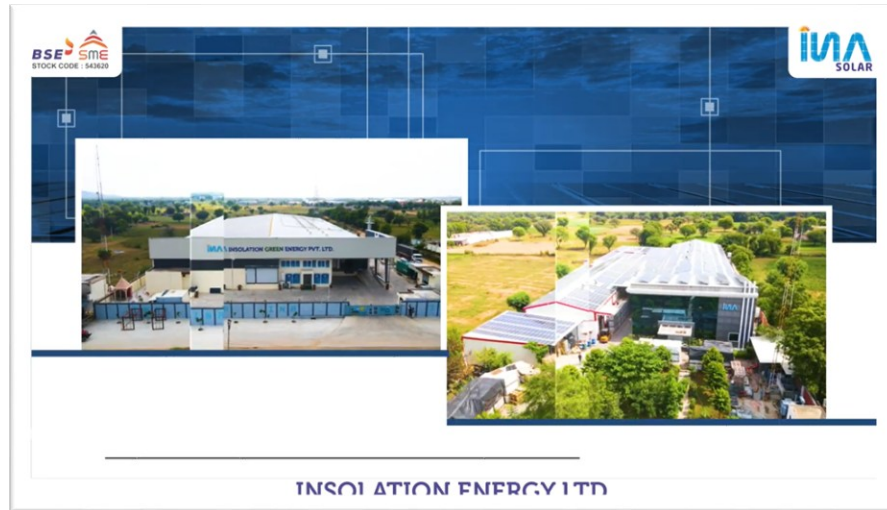
UPCOMING

4.5 GW
SOLAR CELLS

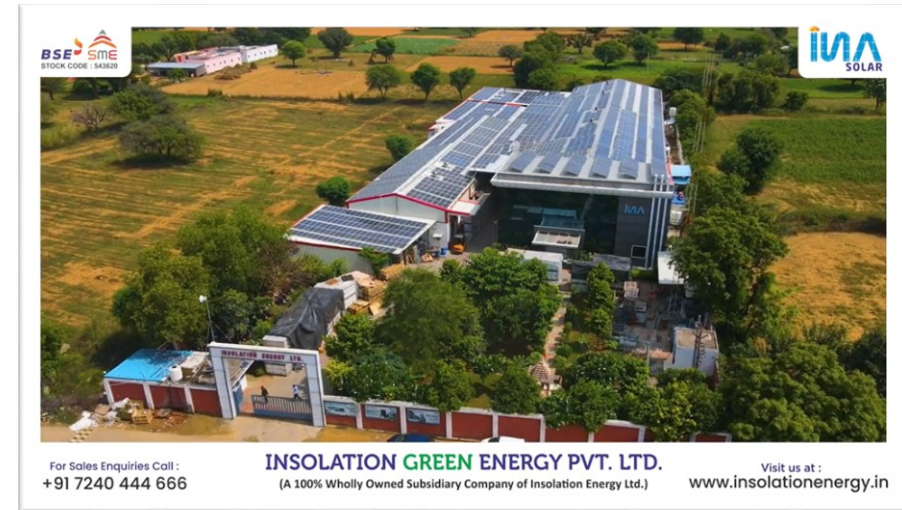
18,000 MTA
ALUMINUM FRAME



BRAND VIDEOS



Illuminating a Sustainable Tomorrow
with INA Solar



Explore the Making of INA Solar Panels -
Where Precision Meets Progress!



1	2	3	4	5	6	7	8	9	10	11	12	13	14	15	16	17	18	19	20	21	22	23	24	25	26	27	28	29	30	31	32	33	34	35	36	37	38	39	40	41	42	43	44	45	46	47	48	49	50	51	52	53	54	55	56	57	58	59	60	61	62	63	64	65	66	67	68	69	70	71	72	73	74	75	76	77	78	79	80	81	82	83	84	85	86	87	88	89	90	91	92	93	94	95	96	97	98	99	100	101	102	103	104	105	106	107	108	109	110	111	112	113	114	115	116	117	118	119	120	121	122	123	124	125	126	127	128	129	130	131	132	133	134	135	136	137	138	139	140	141	142	143	144	145	146	147	148	149	150	151	152	153	154	155	156	157	158	159	160	161	162	163	164	165	166	167	168	169	170	171	172	173	174	175	176	177	178	179	180	181	182	183	184	185	186	187	188	189	190	191	192	193	194	195	196	197	198	199	200	201	202	203	204	205	206	207	208	209	210	211	212	213	214	215	216	217	218	219	220	221	222	223	224	225	226	227	228	229	230	231	232	233	234	235	236	237	238	239	240	241	242	243	244	245	246	247	248	249	250	251	252	253	254	255	256	257	258	259	260	261	262	263	264	265	266	267	268	269	270	271	272	273	274	275	276	277	278	279	280	281	282	283	284	285	286	287	288	289	290	291	292	293	294	295	296	297	298	299	300	301	302	303	304	305	306	307	308	309	310	311	312	313	314	315	316	317	318	319	320	321	322	323	324	325	326	327	328	329	330	331	332	333	334	335	336	337	338	339	340	341	342	343	344	345	346	347	348	349	350	351	352	353	354	355	356	357	358	359	360	361	362	363	364	365	366	367	368	369	370	371	372	373	374	375	376	377	378	379	380	381	382	383	384	385	386	387	388	389	390	391	392	393	394	395	396	397	398	399	400	401	402	403	404	405	406	407	408	409	410	411	412	413	414	415	416	417	418	419	420	421	422	423	424	425	426	427	428	429	430	431	432	433	434	435	436	437	438	439	440	441	442	443	444	445	446	447	448	449	450	451	452	453	454	455	456	457	458	459	460	461	462	463	464	465	466	467	468	469	470	471	472	473	474	475	476	477	478	479	480	481	482	483	484	485	486	487	488	489	490	491	492	493	494	495	496	497	498	499	500	501	502	503	504	505	506	507	508	509	510	511	512	513	514	515	516	517	518	519	520	521	522	523	524
---	---	---	---	---	---	---	---	---	----	----	----	----	----	----	----	----	----	----	----	----	----	----	----	----	----	----	----	----	----	----	----	----	----	----	----	----	----	----	----	----	----	----	----	----	----	----	----	----	----	----	----	----	----	----	----	----	----	----	----	----	----	----	----	----	----	----	----	----	----	----	----	----	----	----	----	----	----	----	----	----	----	----	----	----	----	----	----	----	----	----	----	----	----	----	----	----	----	----	-----	-----	-----	-----	-----	-----	-----	-----	-----	-----	-----	-----	-----	-----	-----	-----	-----	-----	-----	-----	-----	-----	-----	-----	-----	-----	-----	-----	-----	-----	-----	-----	-----	-----	-----	-----	-----	-----	-----	-----	-----	-----	-----	-----	-----	-----	-----	-----	-----	-----	-----	-----	-----	-----	-----	-----	-----	-----	-----	-----	-----	-----	-----	-----	-----	-----	-----	-----	-----	-----	-----	-----	-----	-----	-----	-----	-----	-----	-----	-----	-----	-----	-----	-----	-----	-----	-----	-----	-----	-----	-----	-----	-----	-----	-----	-----	-----	-----	-----	-----	-----	-----	-----	-----	-----	-----	-----	-----	-----	-----	-----	-----	-----	-----	-----	-----	-----	-----	-----	-----	-----	-----	-----	-----	-----	-----	-----	-----	-----	-----	-----	-----	-----	-----	-----	-----	-----	-----	-----	-----	-----	-----	-----	-----	-----	-----	-----	-----	-----	-----	-----	-----	-----	-----	-----	-----	-----	-----	-----	-----	-----	-----	-----	-----	-----	-----	-----	-----	-----	-----	-----	-----	-----	-----	-----	-----	-----	-----	-----	-----	-----	-----	-----	-----	-----	-----	-----	-----	-----	-----	-----	-----	-----	-----	-----	-----	-----	-----	-----	-----	-----	-----	-----	-----	-----	-----	-----	-----	-----	-----	-----	-----	-----	-----	-----	-----	-----	-----	-----	-----	-----	-----	-----	-----	-----	-----	-----	-----	-----	-----	-----	-----	-----	-----	-----	-----	-----	-----	-----	-----	-----	-----	-----	-----	-----	-----	-----	-----	-----	-----	-----	-----	-----	-----	-----	-----	-----	-----	-----	-----	-----	-----	-----	-----	-----	-----	-----	-----	-----	-----	-----	-----	-----	-----	-----	-----	-----	-----	-----	-----	-----	-----	-----	-----	-----	-----	-----	-----	-----	-----	-----	-----	-----	-----	-----	-----	-----	-----	-----	-----	-----	-----	-----	-----	-----	-----	-----	-----	-----	-----	-----	-----	-----	-----	-----	-----	-----	-----	-----	-----	-----	-----	-----	-----	-----	-----	-----	-----	-----	-----	-----	-----	-----	-----	-----	-----	-----	-----	-----	-----	-----	-----	-----	-----	-----	-----	-----	-----	-----	-----	-----	-----	-----	-----	-----	-----	-----	-----	-----	-----	-----	-----	-----	-----	-----	-----	-----	-----	-----	-----	-----	-----	-----	-----	-----	-----	-----	-----	-----	-----	-----	-----	-----	-----	-----	-----	-----	-----	-----	-----	-----	-----	-----	-----	-----	-----	-----	-----	-----	-----	-----	-----	-----	-----	-----	-----	-----	-----	-----	-----	-----	-----	-----	-----	-----	-----	-----	-----	-----	-----	-----	-----	-----	-----	-----

Date: 05/04/2024

To,
M/s. Insolation Green Energy Pvt Ltd
Kharsa No 111, 1136/9, Choms, Jatavali,
Jaipur, Rajasthan-302001

Sub: Statement of Compliance Letter for Ammonia Testing for One ROM of PV Modules

This is to inform you that we have completed Ammonia testing on your submitted Crystalline Photovoltaic Module Model (NA-144MHC-WF-545 under project no- 4790408605.4 and after the successful completion of testing, all the samples met the compliance criteria of degradation less than 5% with satisfactory results and complied with the test standard. The final test report has been issued to M/s. Insolation Green Energy Pvt Ltd with report no.4790408605.4-S1 issue dated 22/12/2022 and rating addition by 10% under test report reference no. 4791104986.6-1-Other-S2 dated 05/04/2024.

Standard: IEC 62716 Edition 1.0, 2013-06- Photovoltaic (PV) modules – Ammonia corrosion testing

Models covered:

- 144 Half Cut Cell Series: NA-144MHC-WF-xxx, xxx stands for power range from 520-590, in step of 5 W
- 144 Half Cut Cell Series: NA-144MHC-TF-xxx, xxx stands for power range from 520-590, in step of 5 W
- 132 Half Cut Cell Series: NA-132MHC-WF-xxx, xxx stands for power range from 480-525, in step of 5 W
- 132 Half Cut Cell Series: NA-132MHC-TF-xxx, xxx stands for power range from 480-525, in step of 5 W
- 120 Half Cut Cell Series: NA-120MHC-WF-xxx, xxx stands for power range from 435-475, in step of 5 W
- 120 Half Cut Cell Series: NA-120MHC-TF-xxx, xxx stands for power range from 435-475, in step of 5 W
- 108 Half Cut Cell Series: NA-108MHC-WF-xxx, xxx stands for power range from 390-430, in step of 5 W
- 108 Half Cut Cell Series: NA-108MHC-TF-xxx, xxx stands for power range from 390-430, in step of 5 W

Sincerely Yours,

Jayalaxmi
Engineering Project Associate
UL India Private Limited.

Disclaimer: Test results apply only to the sample(s) actually tested by UL LLC. The client provided all of the test samples for testing by UL. UL did not select the samples or determine whether the samples provided were representative of other manufactured products. UL has not established Follow-Up Service or other services of the product. The client and/or manufacturer are solely and fully responsible for conformity of all products to all applicable standards, specifications or requirements. UL Logo and Marks shall not be used in connection with the above listed products(s). Only those products bearing the UL Listing and Classification Marks shall be considered as being covered by UL's Listing, Classification and Follow-Up Service. Look for the UL Listing and Classification Mark on the product.

UL India Private Limited

Registered Office: Plot No. 6, Kirti Nagar, New Delhi-110028

UL-India Pvt. Ltd. New Branch: Kirti Nagar, New Delhi-110028

UL-India Pvt. Ltd. New Branch: Kirti Nagar, New Delhi-110028

UL-India Pvt. Ltd. New Branch: Kirti Nagar, New Delhi-110028

IEC Certificate



UL Certified

Our solar panels are crafted to uphold world-class standards, ensuring exceptional quality and high-performance gaining accreditation from all National & International Certification bodies that includes ALMM, Ministry of New and Renewable Energy & Bureau of Labour Statistics.

SPHERE OF OPERATIONS

SOLAR PARK



C & I



RESIDENTIAL



SOLAR PUMP



CORE PRODUCT PORTFOLIO

We offer a diverse and advanced portfolio of solar PV modules designed for maximum efficiency and reliability, even in low-light conditions. Our state-of-the-art manufacturing capabilities enable us to produce high-efficiency modules including cutting-edge MonoPERC and TOPCon technologies.

TOPCon Module G12R* : 610 Wp – 635 Wp

TOPCon Module M10R : 560 Wp – 600 Wp (DCR-NDCR)

MonoPERC Modules : 500 Wp – 560 Wp (DCR-NDCR)

Every module undergoes rigorous quality testing to ensure compliance with both Indian and global standards. Our products are proudly **Made in India, Made for the World** and carry certifications from



ALMM Approved



BIS Certified



IEC Certified



ISO Certified



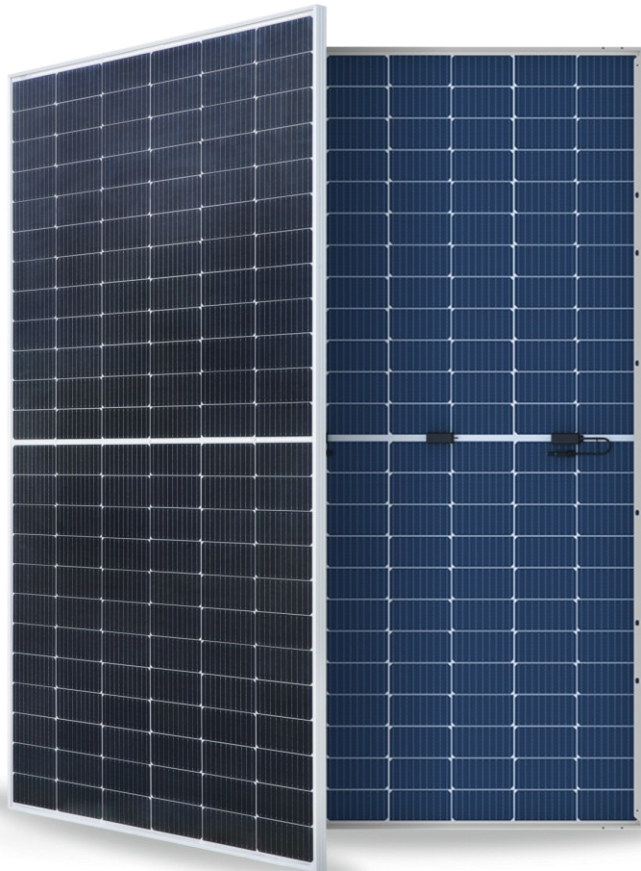
CE Certified



UL Certified



ensuring performance, safety, and long-term value.



CORE PRODUCT PORTFOLIO

We offer a diverse and advanced portfolio of solar PV modules designed for maximum efficiency and reliability, even in low-light conditions. Our state-of-the-art manufacturing capabilities enable us to produce high-efficiency modules including cutting-edge MonoPERC and TOPCon technologies.



TOPCon G12R*

PLATINUM
610 Wp – 635 Wp



TOPCon M10R

PLATINUM
560 Wp – 600 Wp
(DCR-ND CR)



MonoPERC
Bi-facial / Monofacial

DIAMOND
500 Wp – 560 Wp
(DCR-ND CR)

Participated in Various Government Scheme



and Many More...

VIDEO



India's first 2.81 MW
"Floating Solar Hydrogen Plant"



Solar Panels supplied by INA Solar at
Kanpur Metro Depot



IPO Listing Ceremony At BSE SME,
Insolation Energy Limited (INA SOLAR)



INA Solar Shines Bright: Dominating SEBI
BRSR Rankings based on Market
Capitalization in 2024!



8 Years of Solar Excellence



INA Solar X Oorja 3.0 Channel Partners
Meet 2024



CLIENT TESTIMONIALS



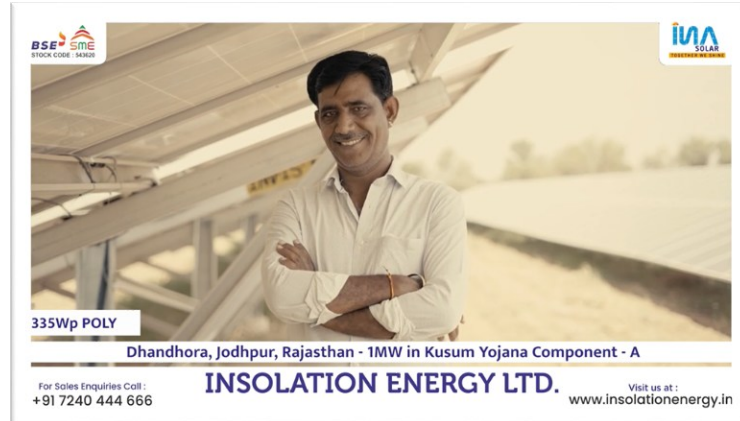
550Wp Half Cut Mono Perc **PM Kusum Yojana Component C - 2.5MW**
Location - Kumbhpuriya, Chomu, Jaipur, Rajasthan
For Sales Enquiries Call : +91 7240 444 666 **INSOLATION ENERGY LTD.** Visit us at : www.insolationenergy.in

2.5 MW in PM Kusum Yojana Component-C
550 Wp - MonoPERC Half Cut




550Wp Half Cut Mono Perc **PM Kusum Yojana Component C - 4.5MW**
Location - Kumbhpuriya, Chomu, Jaipur, Rajasthan
For Sales Enquiries Call : +91 7240 444 666 **INSOLATION ENERGY LTD.** Visit us at : www.insolationenergy.in

4.5 MW in PM Kusum Yojana Component-C
550 Wp - MonoPerc Half Cut

335Wp POLY **Dhandhora, Jodhpur, Rajasthan - 1MW in Kusum Yojana Component - A**
For Sales Enquiries Call : +91 7240 444 666 **INSOLATION ENERGY LTD.** Visit us at : www.insolationenergy.in

1 MW in PM Kusum Yojana Component-A
335 Wp - POLY





1MW in Kusum Yojana Component-A | 545Wp - MonoPerc half Cut
Shri Sachiya Solar Energy, Poonasar, Jodhpur
For Sales Enquiries Call : +91 7240 444 666 **INSOLATION ENERGY LTD.** Visit us at : www.insolationenergy.in

1 MW in PM Kusum Yojana Component-A
545 Wp - MonoPERC Half Cut



CLIENT TESTIMONIALS



INSOLATION ENERGY LTD.

For Sales Enquiries Call : +91 7240 444 666 Visit us at : www.insolationenergy.in


**2.2 MW in PM Kusum Yojana Component-A
550 Wp - MonoPERC Half Cut**




INSOLATION ENERGY LTD.

For Sales Enquiries Call : +91 7240 444 666 Visit us at : www.insolationenergy.in


**2 MW in PM Kusum Yojana Component-A
550 Wp - MonoPERC Half Cut Bi-facial**

INSOLATION ENERGY LTD.

For Sales Enquiries Call : +91 7240 444 666 Visit us at : www.insolationenergy.in

**Industrial Plant - 500 KW
545 Wp MonoPERC Half Cut**

INSOLATION ENERGY LTD.

For Sales Enquiries Call : +91 7240 444 666 Visit us at : www.insolationenergy.in

**Industrial Plant - 600 KW
545 Wp MonoPERC Half Cut**



INNOVATION AT THE CORE

Commitment :

Strong focus on research and technology

Innovations :

Advanced solar modules

High-efficiency solar cells

Enhanced energy storage solutions

Technological Edge :

Cutting-edge manufacturing techniques

Superior product durability and performance

Sustainability :

Continuous development of eco-friendly technologies.





HEALTH, SAFETY & ENVIRONMENTAL COMPLIANCE

Integrate Health, Safety & Environment Procedures and best practices into every operational activity.

Ensure total compliance with all applicable occupational health, safety & environment regulations.

Encourage employees in maintaining a safe & healthy workplace , safe methods of work & safe working environment.

THE BRAND STORY

AMPLIFIED AWARENESS

INA Solar's Brand awareness is a testament to its structured marketing efforts fueled by LSG Partnership for IPL 2024, immaculate advertising, and PR campaigns.

The company's association with the Indian Premier League has significantly boosted its visibility, reaching a vast and diverse audience. Their advertising efforts are always crisply planned, ensuring consistent brand messaging and high impact. By effective PR campaigns, INA Solar has successfully established a strong brand presence across India, making it a household name in the solar energy sector.

CUSTOMER LOYALTY

INA Solar enjoys remarkable customer loyalty, driven by its strong brand awareness and the consistent quality of its products and services.

The company has been tremendously successful in new customer acquisition while retaining its old clients impersonating a strong goodwill among its customers.

HIGHER SALES & PROFITS

INA Solar's sales and profits have surged due to its manufacturing excellence & strategic marketing, measures including large partnerships like the Indian Premier League, which have boosted its brand visibility across the world

Its commitment to quality and innovation ensures customer satisfaction and repeat business. Strong customer loyalty, effective advertising, and robust PR efforts have further strengthened their market presence, translating to greater consumer trust and higher revenue.



CORPORATE SOCIAL RESPONSIBILITY

WOMEN EMPOWERMENT



INA Solar is committed to advancing woman empowerment by creating employment opportunities and fostering an inclusive work environment that enhances female leadership and development.

UNDER PRIVILEGED CHILD EDUCATION



INA dedicates resources to support the education of underprivileged children, ensuring they have access to the knowledge and tools needed to build a brighter future for them.

ENVIRONMENTAL SAFETY



INA prioritizes environmental safety through sustainable practices and innovative technologies, striving to minimize its ecological footprint and protect our planet for future generations.

ROOFTOP SOLAR AT A COW REHABILITATION CENTER IN JAIPUR



INA installed a rooftop solar system at a Cow Rehabilitation Center in Jaipur, cutting electricity costs and ensuring sustainable, reliable power for the cows' care.

AWARDS & RECOGNITIONS



**CERTIFICATE OF APPRECIATION
AT RISING RAJASTHAN
IMPACT 1.0 - 2025**

Honoured by
SHRI BHAJAN LAL SHARMA JI
Chief Minister of Rajasthan



**SOLAR MODULE COMPANY OF THE YEAR
- UTILITY SCALE (DOMESTIC MANUFACTURER)
- 2025**

Awarded by
EQ INT'L



**RAJASTHAN VISIONARY IN
SOLAR PANEL MANUFACTURING
2025**

Awarded by
MY FM 94.3



**BEST EMPLOYER
(ALL ROUND PERFORMER)
- 2024**

Awarded by
EMPLOYERS ASSOCIATION OF RAJASTHAN (EAR)



**OUTSTANDING CONTRIBUTION TO
INDIA'S MANUFACTURING
ECONOMY - 2025**

Awarded by
HURUN INDIA



**EXCELLENCE IN
ENERGY SECTOR (MANUFACTURER)
- 2024**

Awarded by
ET, RAJASTHAN BUSINESS SUMMIT

EVENTS



REI Expo 2025 (Greater Noida)



Renewx Expo 2025 (Chennai)



INA Solar 8th Anniversary



Inter Solar, Gandhinagar-2025



National Solar and EV Expo,
Lucknow - 2025



Oorja-3.0



Vibrant Gujarat, Gandhinagar
2024



RE+, Las Vegas, Nevada, USA
2023

में किए गए उल्लेखनीय कार्य के लिए दिया गया है। इस अवसर पर कंपनी के चेयरमैन मनोनी गुप्ता ने माई एफएम की टीम का आभार व्यक्त करते हुए कहा कि यह हमारे लिए गर्व की बात है कि माई एफएम ने हमारे प्रयासों और उपलब्धियों को पहचाना और उन्हें इस सम्मान से नवाजा। यह अवार्ड हमारी पूरी टीम की मेहनत और सौजस्य को आगे बढ़ाने की प्रतिक्रिया के प्रतीक है।

अजय/ आईएनएस ने अपनी सहायक इन्डस्ट्रियल्स एन एनजी प्रो. लि. के तहत मास प्रदेरा के रमेशपुरा गांव में अपनी चौकी उदघाटन इवेंट को भूमिजुत किया है। यह इवेंट दो चरणों में विकसित होगा। पहले चरण में 2027 तक हर ग्रुप में सातहाना 4.5 गीगावाट सोलर सेलर और 18,000 मिफिक टन एल्युमिनियम प्रसेस क्षमता विकसित की जाएगी। कंपनी के चेयरमैन मनीष गुप्ता और एनडी गीगावाट जैन ने बताया कि कंपनी 2025 तक 5.5 गीगावाट मंडीपुरा क्षमता हासिल करने की को आसरे है। 2028 तक इसका लक्ष्य 10 गीगावाट वीपी मंडीपुरा, 9 गीगावाट सोलर सेलर और 54,000 मिफिक टन एल्युमिनियम प्रसेस करने की है। कंपनी के 15,000 से ज्यादा श्राक, 800 से ज्यादा चैनल प्रोडक्ट और 100 से ज्यादा जिलों में देयक है। कंपनी ने अब तक 100 से ज्यादा साहसिक प्रोजेक्ट को कानियनयन किया है।

देश की टॉप 10 सोलर पैवल
मैनुफैक्चरिंग कंपनियों में
अपनी सीरीसी और NITA इन्वोल्वमेंट
जोड़ा एनर्जी प. लि. (A wholly
owned subsidiary of Insolation
Energy Ltd.) सॉलर, जेनरु -
अउमरे एक्सप्लोरे में मशीनी का
विधित पूजन किया और
संरक्षणपूर्णक मशीनी का ट्रायल
किया।

दुस अउमरे पर कंभी के येरमरेज
की मनीष गुप्ता एड मैनेजिंग
डायरेक्टर की विकास जेन के बताया
कि यह अनुसंधान सुविधा प्रतियोग
4.5 गीगावाट (GW) पीपी मेंसुदृक
का ट्रायल करेगी। प्रत्ययान की
यह ट्रायल कंभी एनर्जी जो AI और
रोबोटिक्स-ड्रिवन सोलर पैवल
मैनुफैक्चरिंग की दिशा में
कार्यरत है।

Commenting on the growth plans, Manish Gupta, chairman of INA, said, "INA Solar has laid out ambitious expansion plans to reach 8 GW of module capacity, 3 GW of solar cell manufacturing, and 54,000 tonne of aluminum frame production by FY 2025-27."

Net profit surged to Rs 126.19 crore in 2024-25, registering a127.50% increase from Rs 55.47 crore in the previous year. Gross margin rose by 86.44%, reaching Rs 231.79 crore, while EBITDA more than doubled to Rs170.32 crore, up 102.35% year-on-year, the

[illegible]

कि आईएनए सोलर लखनऊ सुपर जायंट्स का एसोसिएट पार्टनर है। कंपनी देशभर में स्वच्छ ऊर्जा के क्षेत्र में अग्रणी भूमिका निभा रही है। कंपनी

न सिर्फ घरों और उद्योगों को ऊर्जा दे रही है, बल्कि अब खेल के मैदानों में भी अपनी उपस्थिति से ऊर्जा और प्रेरणा का संचार कर रही है।

जयपुर, समाचार जगत न्यूज, भारत को प्रतिष्ठित सोलर पैनल मैन्युफैक्चरिंग कंपनी, इन्सोलेशन एनर्जी सिस्टिम्स (आईएनएल सोलर), को राजस्थान एनर्जी एक्सीलेट अवॉर्ड 2025 में दो प्रमुख पुरस्कारों से सम्मानित किया गया। इस समारोह में आईएनएल सोलर को 'सोलर पैनल मैन्युफैक्चरिंग कंपनी ऑफ द ईयर' अवॉर्ड और कंपनी के 'चेयरमैन मनीष गुप्ता' को 'बेस्ट सेक्टर सोलर लीडरशिप अवॉर्ड' प्रदान किया गया। इस सम्मान पर चेयरमैन मनीष गुप्ता ने अपने खुशी व्यक्त करते हुए कहा कि 'अबॉर्ड हमारी पूरी टीम के समर्थन

[illegible]

पुत्र की में सोच पाए जलेश (एनए), एन
टी, कान्फेरेन्स मैग्नेटिज्डिंग और सोच पाए

INA SOLAR IN MEDIA

दैनिक भास्कर

जयपुर, बुधवार, 25 सितम्बर, 2024

आईएनए सोलर को बेस्ट अंडर ए बिलियन में मिला स्थान

जयपुर। इन्सोलेशन एनर्जी लिमिटेड (आईएनए सोलर) को फोर्ब्स इंडिया के प्रतिष्ठित फीचर 'बेस्ट अंडर ए बिलियन' में स्थान मिला है। कंपनी के चेयरमैन मनीष गुप्ता एवं एमडी विकास जैन ने इस उपलब्धि का श्रेय समस्त कस्टमर्स, स्ट्रेक होल्डर्स एवं आईएनए सोलर के कर्मचारियों को दिया है। कंपनी की वर्तमान में सोलर पैनल मैनुफैक्चरिंग क्षमता 1000 मेगावाट है। कंपनी जल्द सोलर पैनल 4000 मेगावाट, सोलर सेल 1500 मेगावाट व एल्यूमीनियम फ्रेम 12000 मेट्रिक टन वार्षिक क्षमता की यूनिट लगाएगी।



दैनिक जागरण

जुई दिल्ली, रविवार, 10 सितम्बर, 2024

आईएनए सोलर को मैनुफैक्चरिंग पुरस्कार



आईएनए सोलर को राजस्थान बिजनेस समिटी में एक्सलेंस इन स्केलर पैनल मैनुफैक्चरिंग अवार्ड दिया गया। इस मौके पर अवार्ड लेते कंपनी के चेयरमैन मनीष गुप्ता (दाएं से दूसरे) और एमडी विकास जैन (दाएं से तीसरे) ● लौक्यव - आइएनए सोलर

बि. नई दिल्ली: वलीन व ग्रीन एनर्जी को बढ़ावा देने वाली सोलर पैनल मैनुफैक्चरिंग कंपनी इन्सोलेशन एनर्जी लिमिटेड (आईएनए सोलर) को राजस्थान बिजनेस समिटी में उज्ज्वल के क्षेत्र में एक्सलेंस इन स्केलर पैनल मैनुफैक्चरिंग पुरस्कार - 2024 दिया गया। कंपनी के चेयरमैन मनीष गुप्ता एवं प्रबंध निदेशक विकास जैन ने बताया कि आईएनए सोलर भारत की सर्वश्रेष्ठ 10 सोलर पैनल निर्माताओं में से एक है।

कंपनी राष्ट्रीय व अंतरराष्ट्रीय मानकों आइईसी, एएलएमएम एवं बीआइएस द्वारा मान्यता प्राप्त है। जल जीवन मिशन, कुसुम ए/बी/सी, घरेलू रुक टाप, बीएसएनएल सहित देश की लगभग सभी नौर परिवोजनाओं में शामिल होकर मेक इन इंडिया मिशन को अगे बढ़ रही है। कंपनी की वर्तमान सोलर पैनल बनाने की क्षमता 950 मेगावाट है, इसे बढ़ाकर 4000 मेगावाट किया जाना है।

अमर उजाला

लखनऊ, सोमवार, 26 अगस्त, 2024

इन्सोलेशन एनर्जी को इंडस्ट्री आउटलुक ने किया सम्मानित

जयपुर @ का.सं.। क्लीन व ग्रीन एनर्जी को बढ़ावा देने में प्रतिष्ठित भारत की प्रतिष्ठित सोलर पैनल मैनुफैक्चरिंग कंपनी इन्सोलेशन एनर्जी लिमिटेड (आईएनए सोलर) को इंडस्ट्री आउटलुक द्वारा 2024 में देश के टॉप 10 सोलर पैनल निर्माताओं में से एक के रूप में सम्मानित किया गया है। आईएनए सोलर के चेयरमैन मनीष गुप्ता ने इंडस्ट्री आउटलुक का धन्यवाद करते हुए कहा कि इस उपलब्धि का श्रेय समस्त कस्टमर्स, स्ट्रेक होल्डर्स एवं आईएनए सोलर के कर्मचारियों को जाता है। एमडी विकास जैन ने बताया कि आईएनए सोलर पैनल राष्ट्रीय व अंतरराष्ट्रीय मानकों इक्विप, स्क्रूड क्लर द्वारा मान्यता प्राप्त है और कंपनी देश की लगभग सभी सौर परियोजनाओं जैसे जल जीवन मिशन, कुसुम, घरेलू रुफटॉप, बीएसएनएल इत्यादि में अपनी भागीदारी निभा कर मेक इन इंडिया मिशन को प्रमोट कर रही है।



FIRST INDIA

जयपुर, बुधवार, 10 सितम्बर, 2024



Insolation Energy Limited (INA Solar), a leading solar panel manufacturing company from Rajasthan, India will enter the international market. INA Solar Company's products received immense support from buyers at the recent three-day Indo-East Africa Trade Expo organised by the Federation of Rajasthan Trade and Industry (Forti) in Nairobi, Kenya. Manish Gupta, Chairman, of INA Group met Prime Cabinet Secretary, of the Republic of Kenya Musalia Mudavadi, Principal Secretary State Department for Parliamentary Affairs in the Office of the Prime Cabinet Secretary Aurelia Rono at Indo East Africa Trade Expo and discussed plans to export solar panels on a large scale to Kenya.

मॉर्निंग न्यूज़

जयपुर, बुधवार, 9 अक्टूबर, 2023

आईएनए सोलर का पहली छमाही में शुद्ध लाभ 226.15 प्रतिशत बढ़ा



मॉर्निंग न्यूज़ @ जयपुर। भारत की प्रतिष्ठित सोलर पैनल मैनुफैक्चरिंग कंपनी इन्सोलेशन एनर्जी लिमिटेड ने 30 सितम्बर, 2023 को समाप्त छमाही के वित्तीय परिणाम प्रस्तुत किए हैं। उक्त अवधि में कंपनी ने क्वार्टरलेट बेसिस शीट के अनुसार गत वित्त वर्ष की समान अवधि में अर्जित 115.87 करोड़ रुपए के मुकाबले 280.10 करोड़ रुपए का राज्य अर्जित किया है, जो कि पिछले साल से 141.71 प्रतिशत अधिक है। वहीं उक्त अवधि में कंपनी ने 4.61 करोड़ रुपए के मुकाबले 15.04 करोड़ रुपए का कर परचाय शुद्ध लाभ अर्जित किया है, जो कि पिछले साल के मुकाबले 226.15 प्रतिशत अधिक है।

नफा नुकसान

जयपुर, बुधवार, 22 अक्टूबर, 2023

आईएनए सोलर को बेस्ट एमटॉययर-2023 अवार्ड



जयपुर/का.सं.। राजस्थान की प्रतिष्ठित सोलर पैनल मैनुफैक्चरिंग कंपनी इन्सोलेशन एनर्जी लिमिटेड (आईएनए सोलर) को एमएसएमडी केटगरी में एमटॉययर एवार्ड्स ऑफ राजस्थान ने बेस्ट एमटॉययर-2023 अवार्ड से सम्मानित किया है। यह अवार्ड कंपनी के डायरेक्टर अखिलेश कुमार जैन को सुभाष पी गुप्ता, डिप्टी चीफ ऑफ मिशन, एम्वेसी ऑफ इंडियन इन वियतनाम ने प्रदान किया। कंपनी के चेयरमैन मनीष गुप्ता ने बताया कि इन्सोलेशन एनर्जी लिमिटेड ने 2017 से देश के ग्रीन एनर्जी के टारगेट को प्राप्त करने के लिए अपनी भागीदारी करते हुए राजस्थान को सबसे बड़ी सोलर पैनल मैनुफैक्चरिंग की स्थापना की और आज आईएनए सोलर देश की नई ऑप्टिपुर् पूरे देश में ग्रीन एनर्जी को बढ़ावा देने के लिए देश की मेक इन इंडिया पॉलिसी के साथ एनर्जी सिक्योरिटी में अपनी भागीदारी सुनिश्चित कर रहा है। मैनेजिंग डायरेक्टर विकास जैन ने बताया कि आईएनए सोलर विभिन्न आकारों में उच्च दक्षता के सोलर पैनल, बैटरी और इनवर्टर के निर्माण का व्यवसाय करती है। इस अवार्ड के लिए कंपनी ने इन्सोलेशन परिवार का आभार व्यक्त किया है।

EQ (15)

जयपुर, बुधवार, 22 अक्टूबर, 2023

Insolation Energy Limited (INA Solar) organized Urja 3.0 Channel Partners Meet - EQ



Insolation Energy Limited (INA Solar), India's leading solar panel manufacturing company, renowned for promoting clean and green energy, organized the Urja 3.0 Channel Partners Meet at the ARI Club in Jaipur on 24 May 2023. Company Chairman Manish Gupta, Managing Director Vikas Jain, Non-Executive Independent Director Anil Kumar Gupta, and more than 400 distributors and dealers of Insolation Energy attended the program.

Chairman Manish Gupta thanked everyone for participating in the progress of the Insolation family and discussed the company's targets and business model for the coming year. He also emphasized on Make in India solar panels so that India can be made self-reliant in this sector and a new solar revolution can be brought in the country by connecting every home in India to solar energy.

In this meet, INA Solar also felicitated its top 15 dealers and launched attractive schemes for all its distributors and dealers and gifts were given to the winners through lucky draw.

MD Vikas Jain said that the combined production capacity of the company's two world class modern facilities units in Jaipur is 950 MW per annum. In the coming years, there is a plan to increase the manufacturing capacity to 3000 MW and set up a 2200 MW solar cell manufacturing unit. INA Solar is engaged in the business of manufacturing high efficiency solar panels, batteries and inverters in various units. The company will soon start manufacturing top solar panels in its solar panels of INA Solar ranging from 40 Wp to 400 Wp will be available in the market. All the products of the company are ALMM approved and are recognized by national and international standards like, BIS, IEC, etc. INA Solar is promoting the Make in India mission by participating in the country's schemes like Jal Sevan Mission, Pradhan Mantri Kisan Nijama, Surya Ghar Nijama, BNS, and Solar Park.

Business Standard

जयपुर, बुधवार, 22 अक्टूबर, 2023

Insolation Energy Ltd. (INA Solar) Announces its association with Lucknow Super Giants as the "Official Solar Partner"

Featured on - March 20, 2024



New Delhi (India), March 19: In a landmark move, Insolation Energy Limited (INA Solar) has joined hands with the illustrious Lucknow Super Giants forming a Strategic Partnership to promote the use of Solar Energy for the upcoming T20 season 2024. INA Solar and Lucknow Super Giants T20 Partnership was inaugurated by the Deputy Chief Minister of Uttar Pradesh, Brijesh Pathak. Aligned with the association, the players and official members of the Lucknow Super Giants franchise will be sporting the INA Solar logo on the Leading Trousers of their official matches.

THANK YOU



Corporate office :
Fluidcon House, C-02, New Aatish Market Extension,
Jaipur, Rajasthan - 302020

Delhi office :
607, Indraprakash Building , 21 Barakhamba Road,
New Delhi - 110001

Call : +91 7240 444 666

Web. : www.insolationenergy.in | E-mail : enquiry@insolationenergy.in

Follow Us :      

Manufacturing Unit :

INSOLATION ENERGY LTD.

INA 1 - Factory : Near Daulatpura Toll Tax, Jaipur-Delhi Bypass, Jaipur, Rajasthan - 303805

INSOLATION GREEN ENERGY PVT. LTD.

INA 2 - Factory : Jatawali Industrial Area, Tehsil Chomu, Jaipur, Rajasthan - 303806

INA 3 - Factory : NH - 48, Sawarda, Delhi-Ajmer Expressway, Jaipur, Rajasthan - 303348

INA 4 & 5 - Factory, Mohasa-Babai, Narmadapuram, Bhopal, Madhya Pradesh - 411661



Scan QR Code
to visit our corporate website

INSOLATION ENERGY LTD.